

Introduction



*"I consider myself an Artist Designer & Explorer--
As an Artist I look to create what has not been seen before.*

As a Designer my intent is to combine fresh and original attributes in well thought out solutions.

As an Explorer I am continually Investigating new materials and processes. Each material has its own personality and characteristics which I like to reimagine into never seen before forms".

Glen D. Fuller



Art Exhibitions

- 2019--Gallery of Media Art & Design, Ivy Tech, Columbus, IN
- 2014—IU Center for Art and Design, Columbus, IN
- 2014—Indiana State Museum, Indianapolis, IN
- Hot House Gallery Exhibition, Indianapolis, IN
- Penrod Art Festival Exhibitor X2, Indianapolis, IN

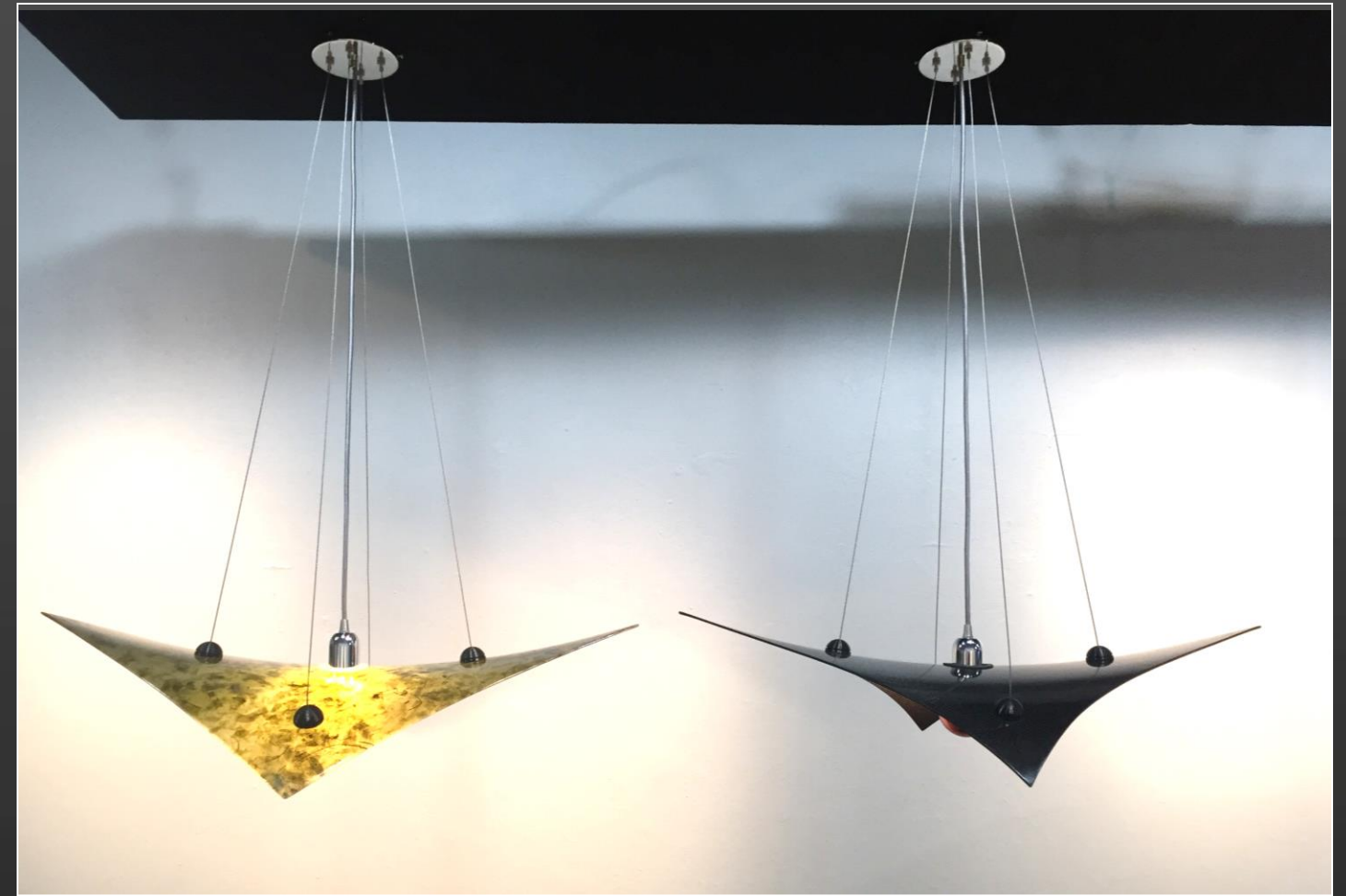
An Exploration of Composites and Laminations Solo Exhibition

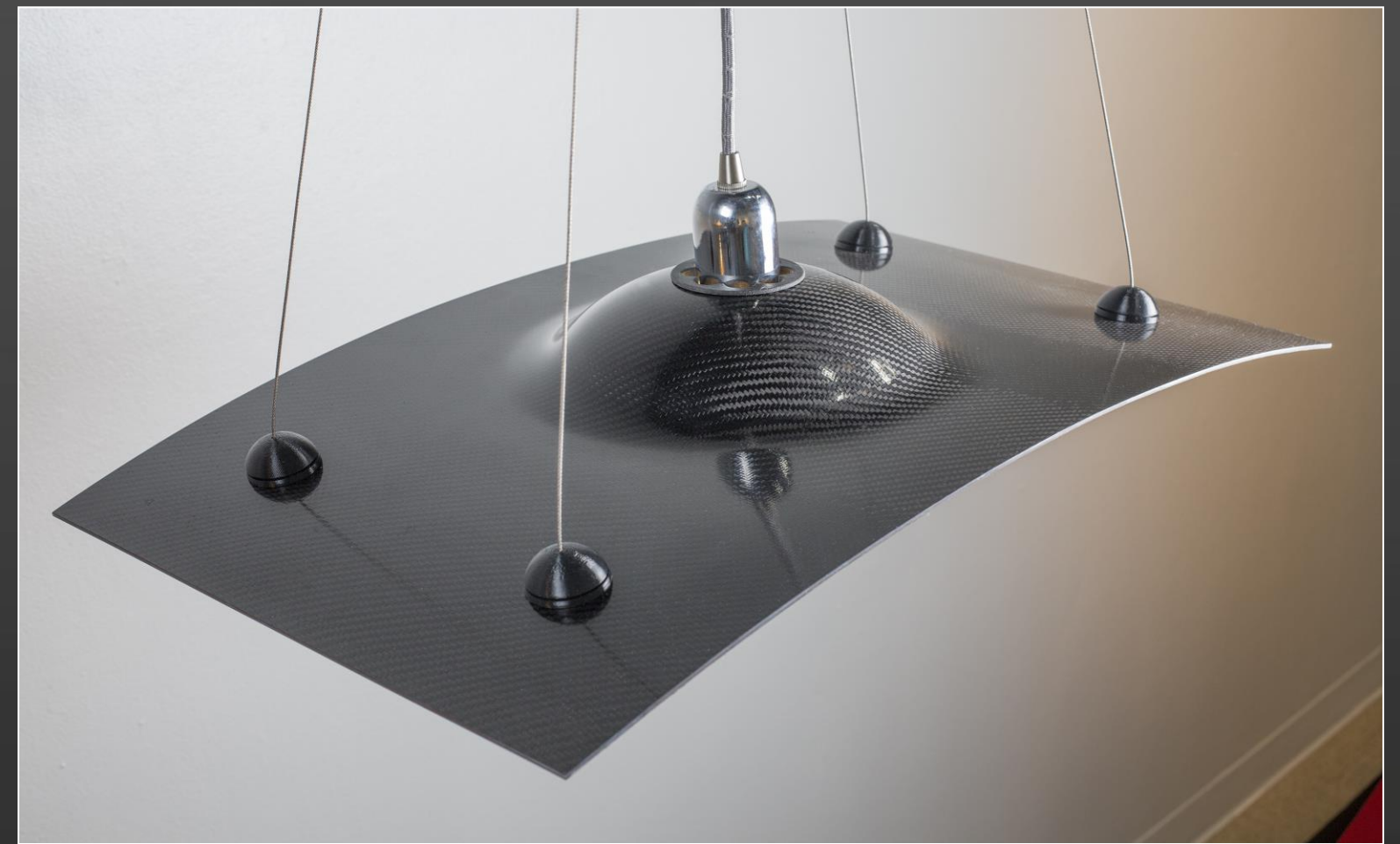
March 08-April 15, 2019

Gallery of Media Art & Design, Ivy Tech, Columbus, IN











KOZO Bar Stool



[un]conventional Furniture Exhibition 2013

Bella Fiber Glass Chair



Collin Tury,
Transiddance,
2013.
White Oak, ash.

[un]conventional

an exhibition of contemporary design
opening at the IU Center for Art + Design

Opening Reception for the Artists:
Friday, November 8, 6 pm - 8 pm

IU Center for Art + Design
310 Jackson Street, Columbus, IN

The Indiana University Center for Art+Design is pleased to present [un]conventional, an exhibition of contemporary furniture design curated by Christopher West. The exhibition opens at the IUCA+D gallery in Columbus on Friday, November 8 and will be on display through late December. [un]conventional showcases the work of multiple designers working in many different mediums. For this exhibition Mr. West has pulled work from studios and collections through-out the Midwest.

Participating designers include central-Indiana based Glen Fuller, Emily Kennerk, Christopher Stuart, Colin Tury and Lauren Zoll; Detroit designers Jack Craig and Chris Schanck; Taryn Cassella from California; Chicago based Steven Haulenbeek as well as Tejo Remy from Utrecht, the Netherlands.



Taryn Cassella,



Glen Fuller,



Tejo Remy,
Rag Chair,
1991.



[Unconventional] Furniture Exhibition 2013 Bella Fiber Glass Chair







Indiana State Museum Fearless Furniture Show Exhibitor 2014



Indiana State Museum
Fearless Furniture Show Exhibitor 2014



RON SCHOUTEN
Rivets & Rust
2014
The artist uses rivets and rust to create a sense of texture and depth in his work.

Star chair

- 6061 aluminum painted prototype shown
- Rotational molded polyethylene for production



Ava Carbon Fiber Series

Ava Coffee Table—Fearless Furniture Exhibition



Ava Carbon Fiber Series

Ava Coffee Table

- Carbon fiber laminates, honeycomb core, SS engraved medallions, 6061 aluminum feet with silicone rubber pads.
- Reverse 4 segment diamond match veneer panel top pattern, high build automotive clear coat finish, buffed and polished

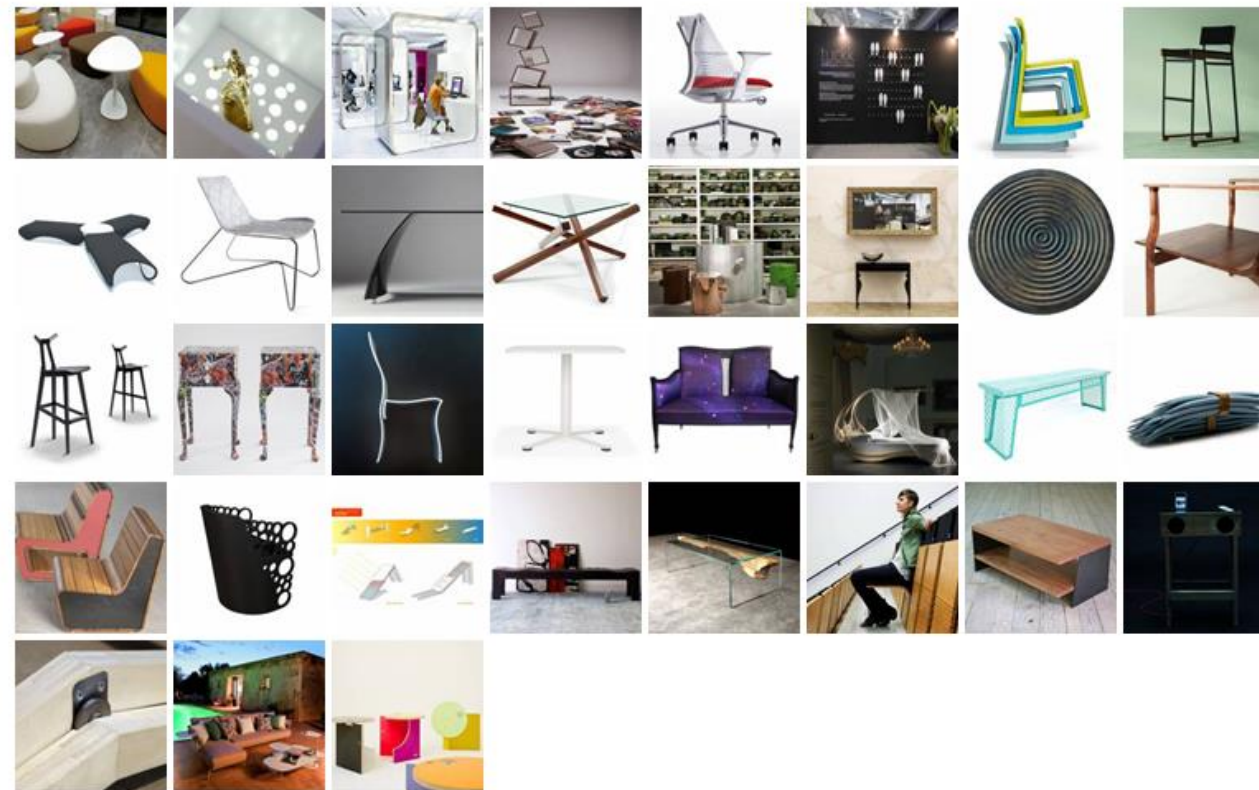


Ava Series Coffee Table -- 2012 design recognition WAN (World Architectural News) design award finalist top 25

WORLD ARCHITECTURE NEWS.COM THE GLOBAL RESOURCE FOR ARCHITECTURE



WAN AWARDS 2011 furniture products - longlist



HOME

HD HOME | CONTACT | BOOKSTORE | AWARDS | EVENTS | SEND US YOUR PROJECTS | JOBS

PROJECTS

Museums
Residential
Hotels
Restaurants
Retail
Commercial
Public

PRODUCTS

Furniture
Accessories
Lighting
Outdoor
Fixtures
Exhibits

INSIDE

a monthly round-up of the world's best interiors and design stories

[CLICK HERE](#)

interiors + design for architects



JUMPSEAT



PAS DE DEUX



JH2



AVA



Penrod Art Festival Furniture



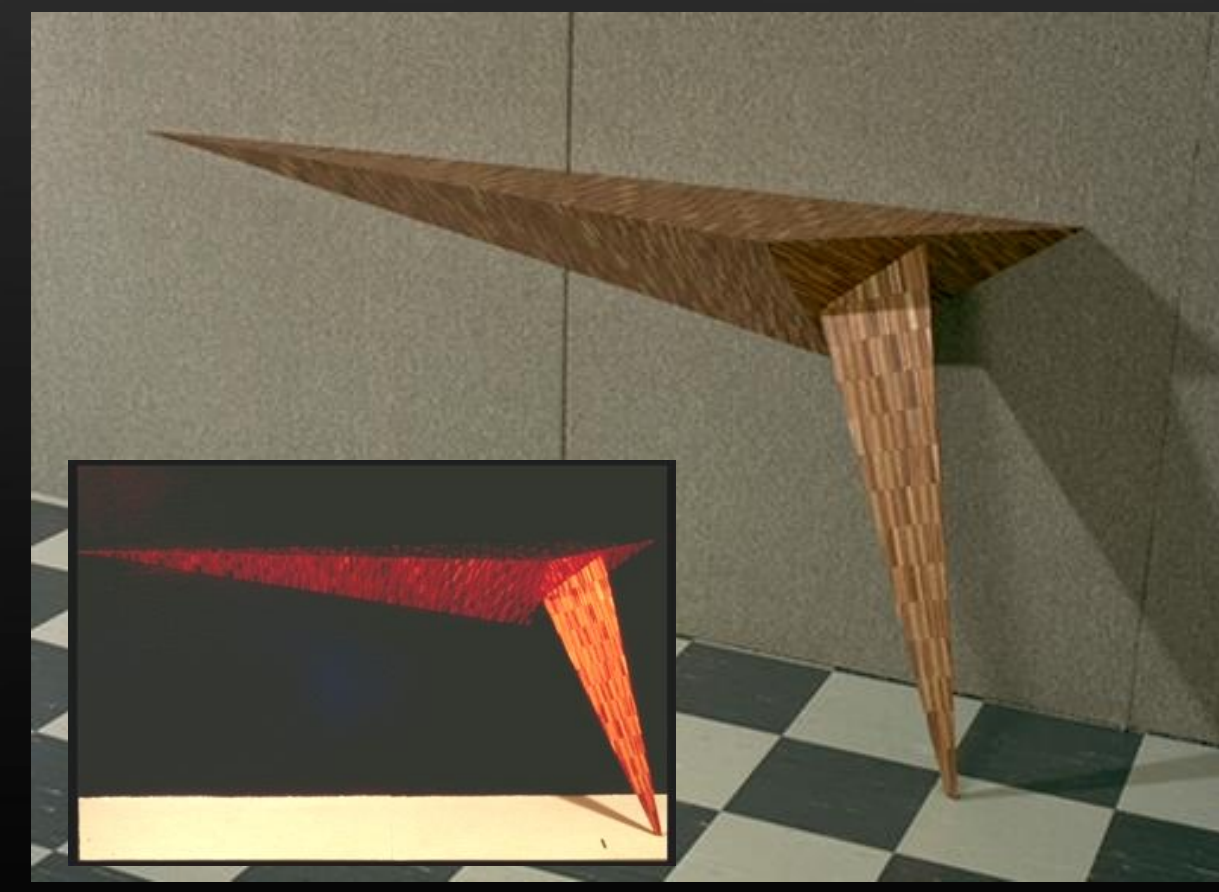
Penrod Art Festival Furniture



Hot House Gallery Solo
Furniture Exhibition



Hot House Gallery
Furniture
Solo Exhibition



End